

Berg & Berg 

# Swedish by Nature

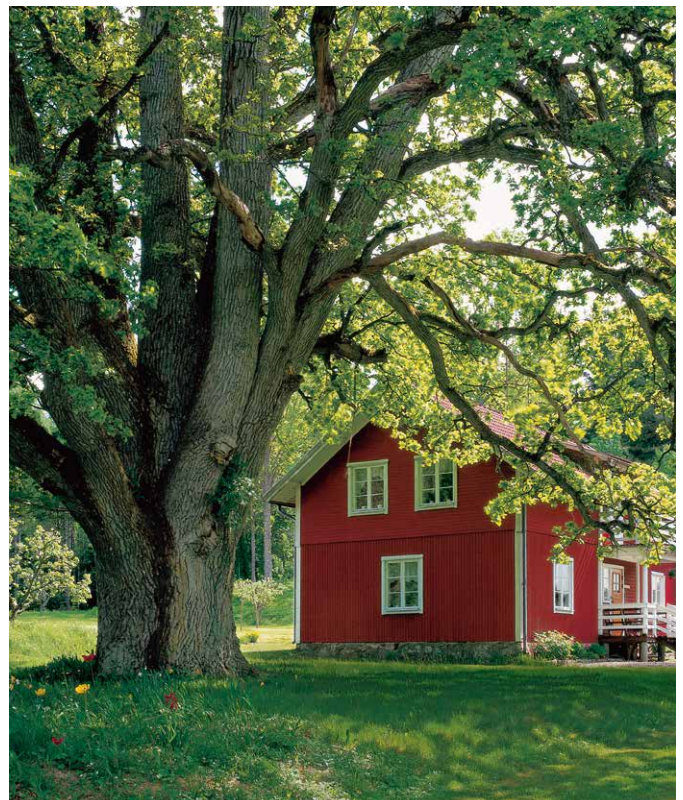
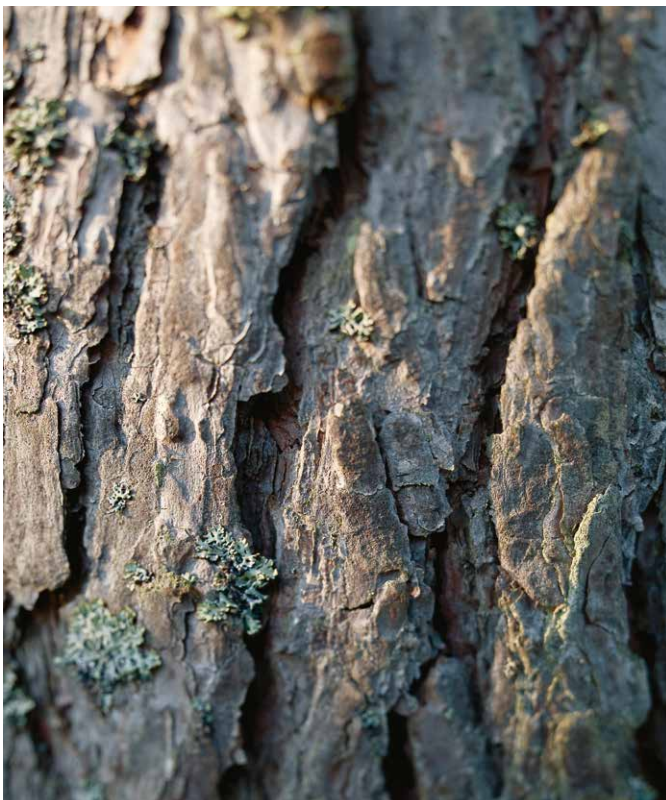


Oak XXL plank, knotty ♥, raw wood effect, brushed, matt lacquered





# We are “Swedish by Nature”. You too?





# Oak Öland

**BB16**

**Oak Öland**

lively ♣

3 strip parquet

finely sanded, matt lacquered

7' 10" x 9/16" x 7-3/16"

1 box = 30.6 sq. ft.

**BB121**

**Oak Öland**

lively ♣

XXL plank

finely sanded, matt lacquered

7' 10" x 9/16" x 7-5/8"

incl. up to 1/3 32"/47"/63"

1 box = 30.1 sq. ft.



---

3 strip parquet ♣



---

xxl plank ♣



04 05

# Oak white

**BB122**

**Oak white**

knotty ♥

XXL plank

brushed, white, matt lacquered

**BB127**

**Oak white**

colourful ♦

XXL plank

brushed, white, matt lacquered

7' 10" x 9/16" x 7-5/8"

incl. up to 1/3 32"/47"/63"

1 box = 30.1 sq. ft.





xxl plank ♥

xxl plank ♦

06 07



# Oak raw wood effect

BB128

**Oak raw wood effect**

knotty ♥

XXL plank

brushed, raw wood effect, matt lacquered

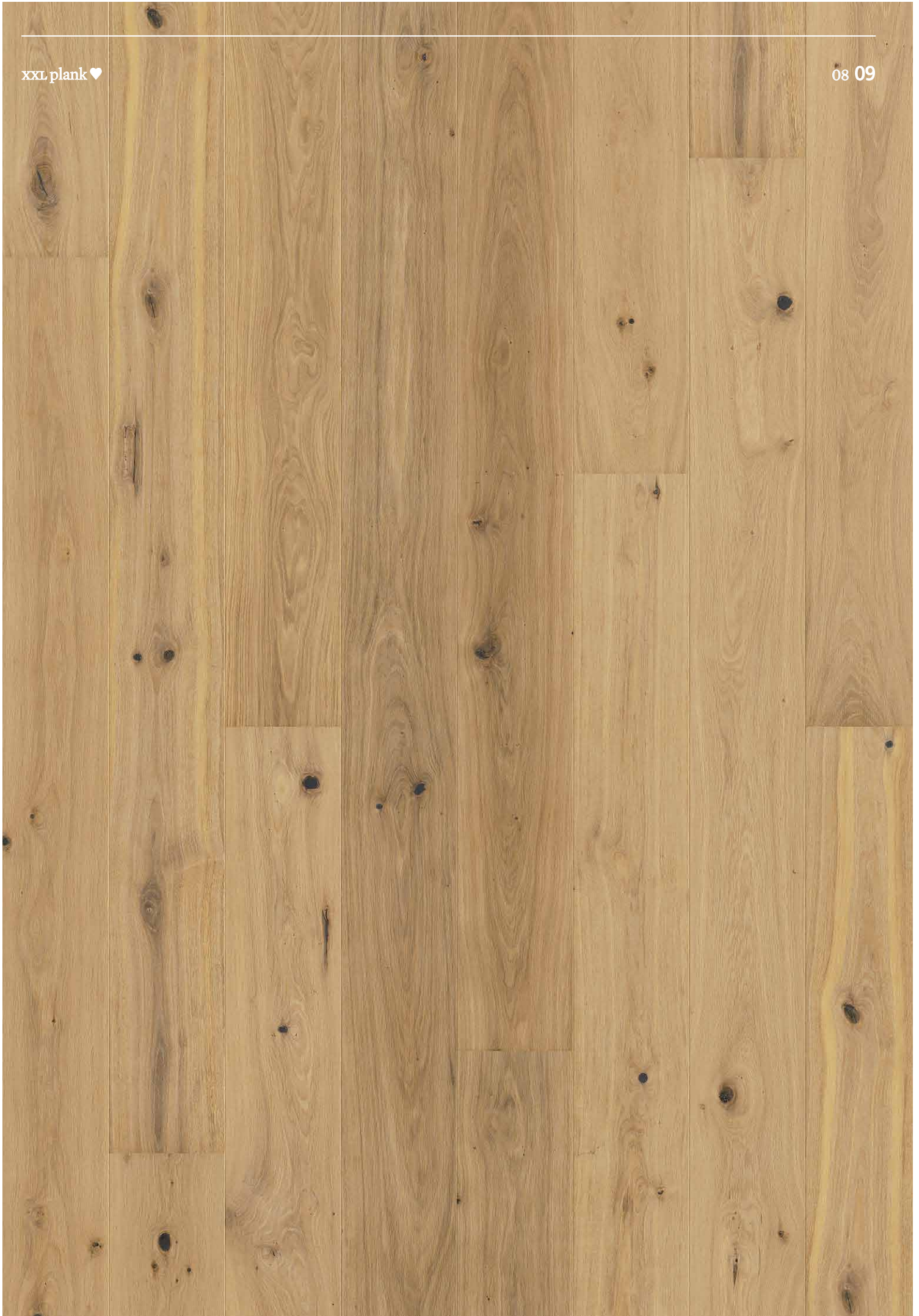
7' 10" x 9/16" x 7-5/8"

incl. up to 1/3 32"/47"/63"

1 box = 30.1 sq. ft.







# Oak

**BB123**

**Oak**

knotty ♥

XXL plank

brushed, matt lacquered

7' 10" x 9'16" x 7-5/8"

incl. up to 1/3 32"/47"/63"

1 box = 30.1 sq. ft.







# Oak

**BB1M**

**Oak**

lively ♣

3 strip parquet

finely sanded, matt lacquered

7' 10" x 9' 16" x 7-3/16"

1 box = 30.6 sq. ft.









# Oak Värmland

## MAINTANANCE INSTRUCTION

Oak Värmland XXL planks come with a factory finished natural oil surface. Detailed instructions for the maintenance and cleaning of this product are found under [www.berg-berg.com](http://www.berg-berg.com).

BB126

**Oak Värmland**

knotty ♥

XXL plank

rustic, brushed, smoked, Värmlandshade oiled

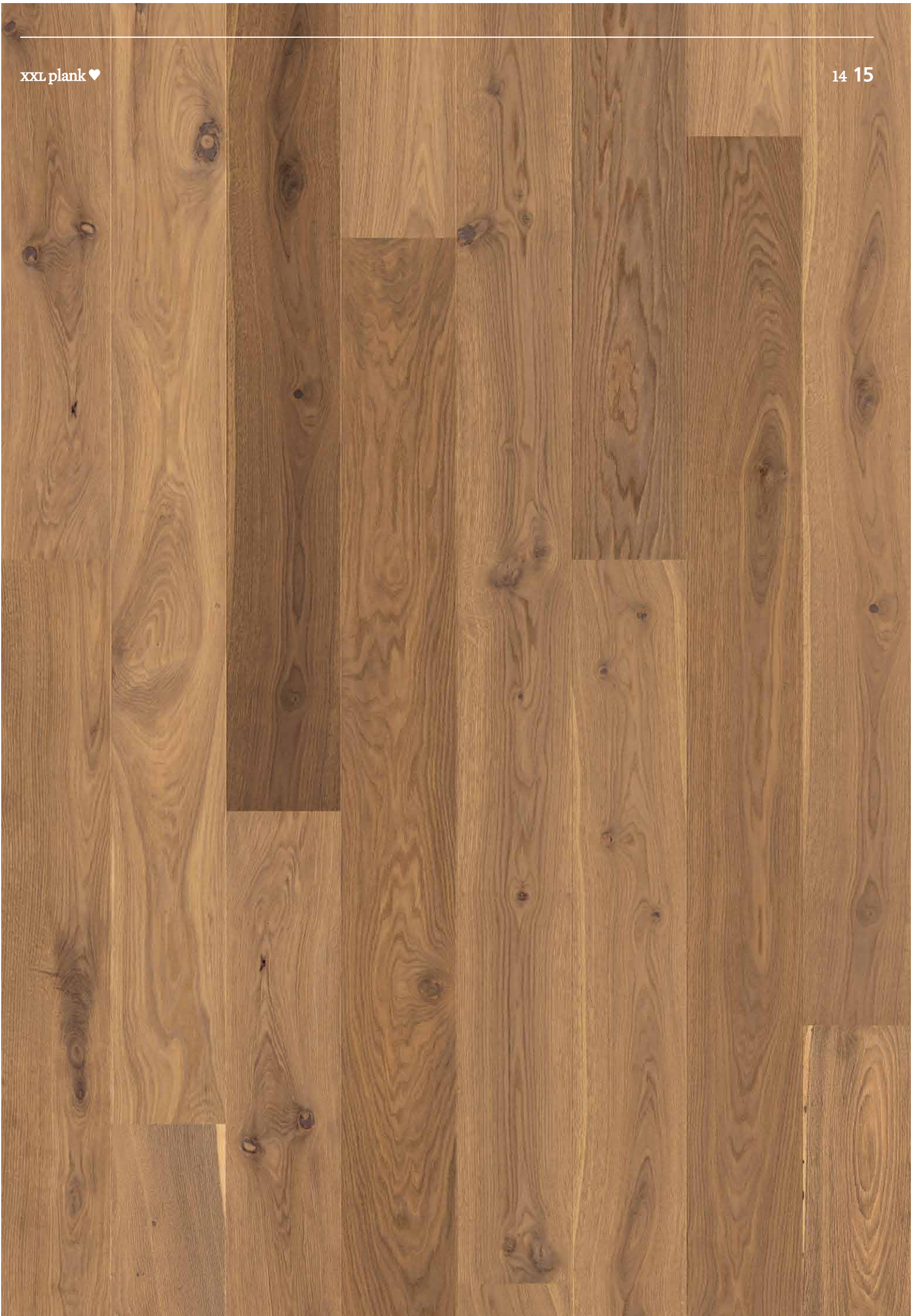
7' 10" x 9/16" x 7-5/8"

incl. up to 1/3 32"/47"/63"

1 box = 30.1 sq. ft.







# Oak Dalarna

**BB15**

**Oak Dalarna**

lively ♣

3 strip parquet

brushed, dark brown stained, matt lacquered

7' 10" x 9/16" x 7-3/16"

1 box = 30.6 sq. ft.

**BB120**

**Oak Dalarna**

lively ♣

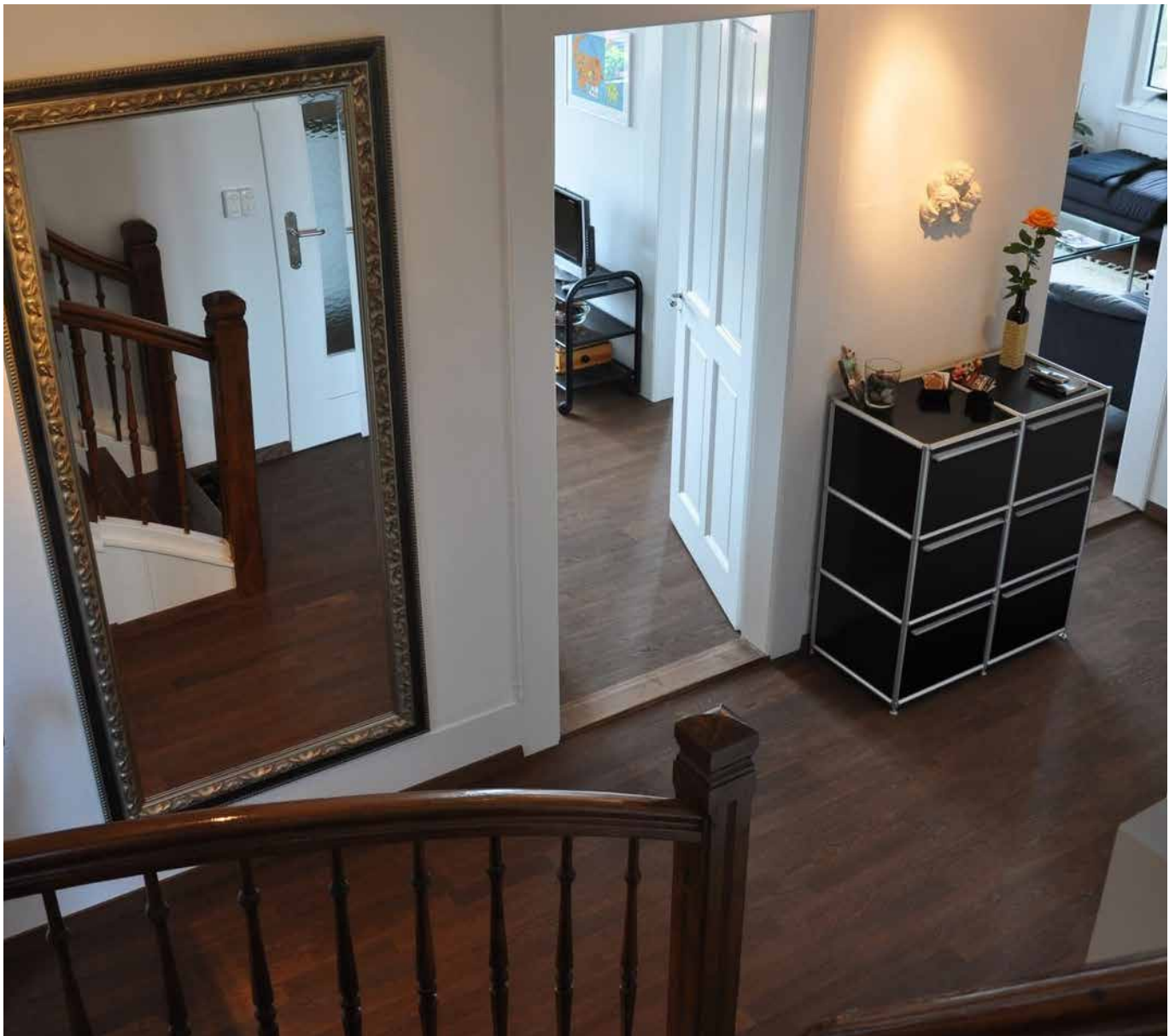
XXL plank

brushed, dark brown stained, matt lacquered

7' 10" x 9/16" x 7-5/8"

incl. up to 1/3 32"/47"/63"

1 box = 30.1 sq. ft.





---

3 strip parquet ♠

xxxl plank ♠

16 17



# Oak Västerbotten

**BB124**

**Oak Västerbotten**

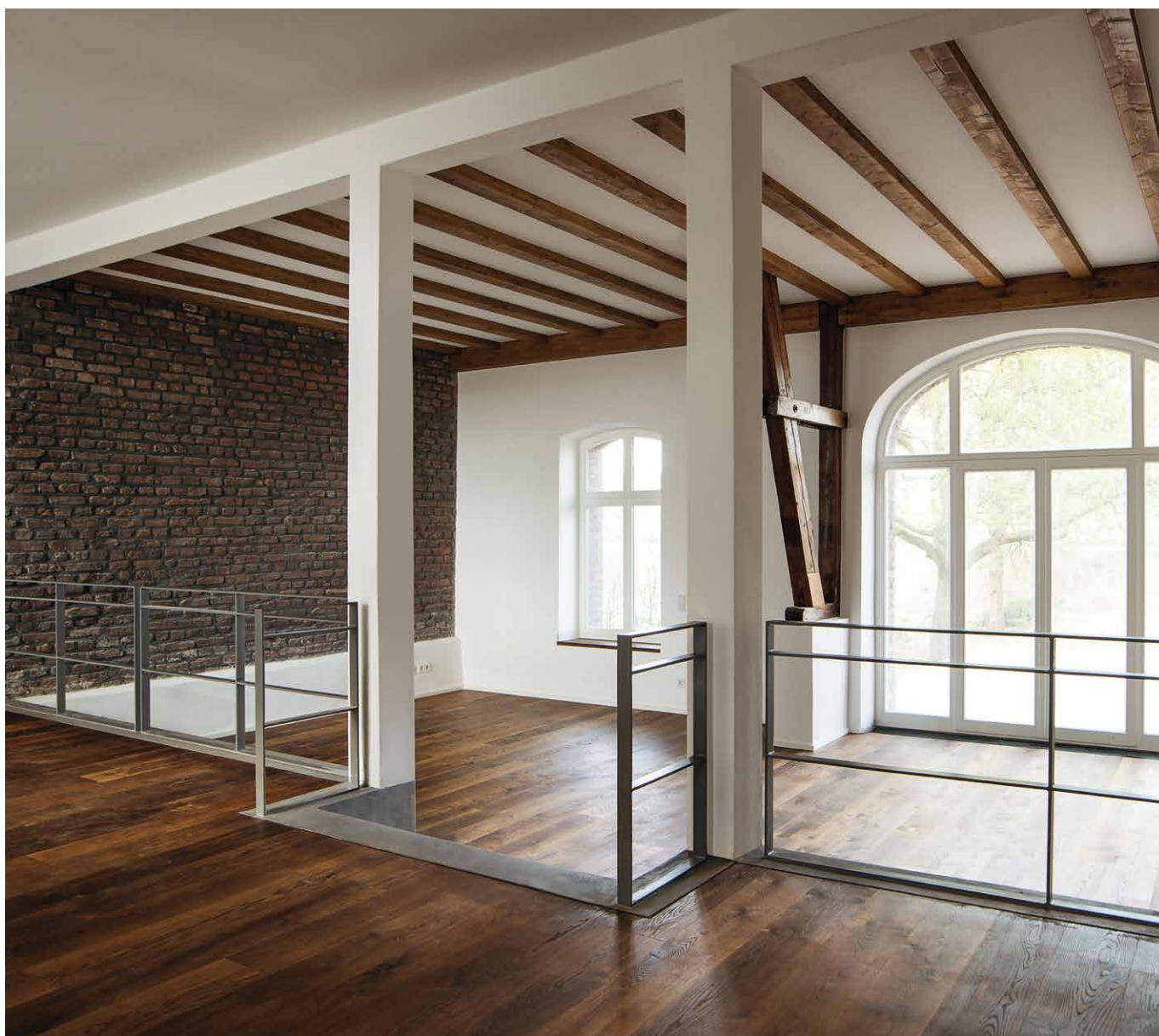
XXL plank

brushed, deep-smoked, matt lacquered

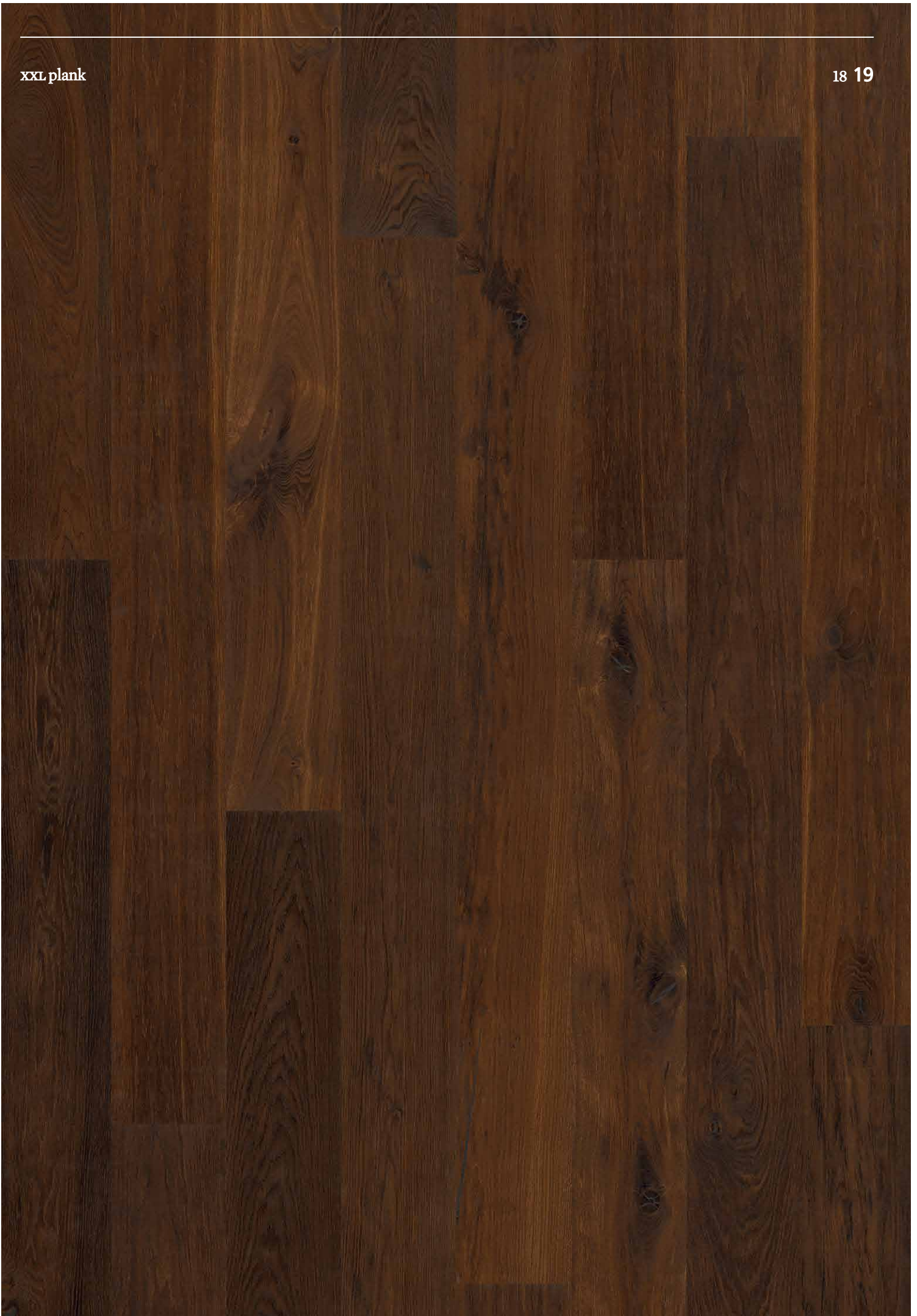
7' 10" x 9/16" x 7-5/8"

incl. up to 1/3 32"/47"/63"

1 box = 30.1 sq. ft.







# Oak XS

## MAINTANANCE INSTRUCTION

Oak XS boards come with a factory finished natural oil surface. Detailed instructions for the maintenance and cleaning of this product are found under [www.berg-berg.com](http://www.berg-berg.com).

BB1S

Oak XS

On edge design  
finely sanded, nature oiled

7' 10" x 9/16" x 7-5/8"

incl. up to 1/3 32"/47"/63"

1 box = 30.1 sq. ft.









# Oak XS dark

## MAINTANANCE INSTRUCTION

Oak XS boards come with a factory finished natural oil surface. Detailed instructions for the maintenance and cleaning of this product are found under [www.berg-berg.com](http://www.berg-berg.com).

## BB1SD

### Oak XS dark

On edge design

finely sanded, smoked, nature oiled

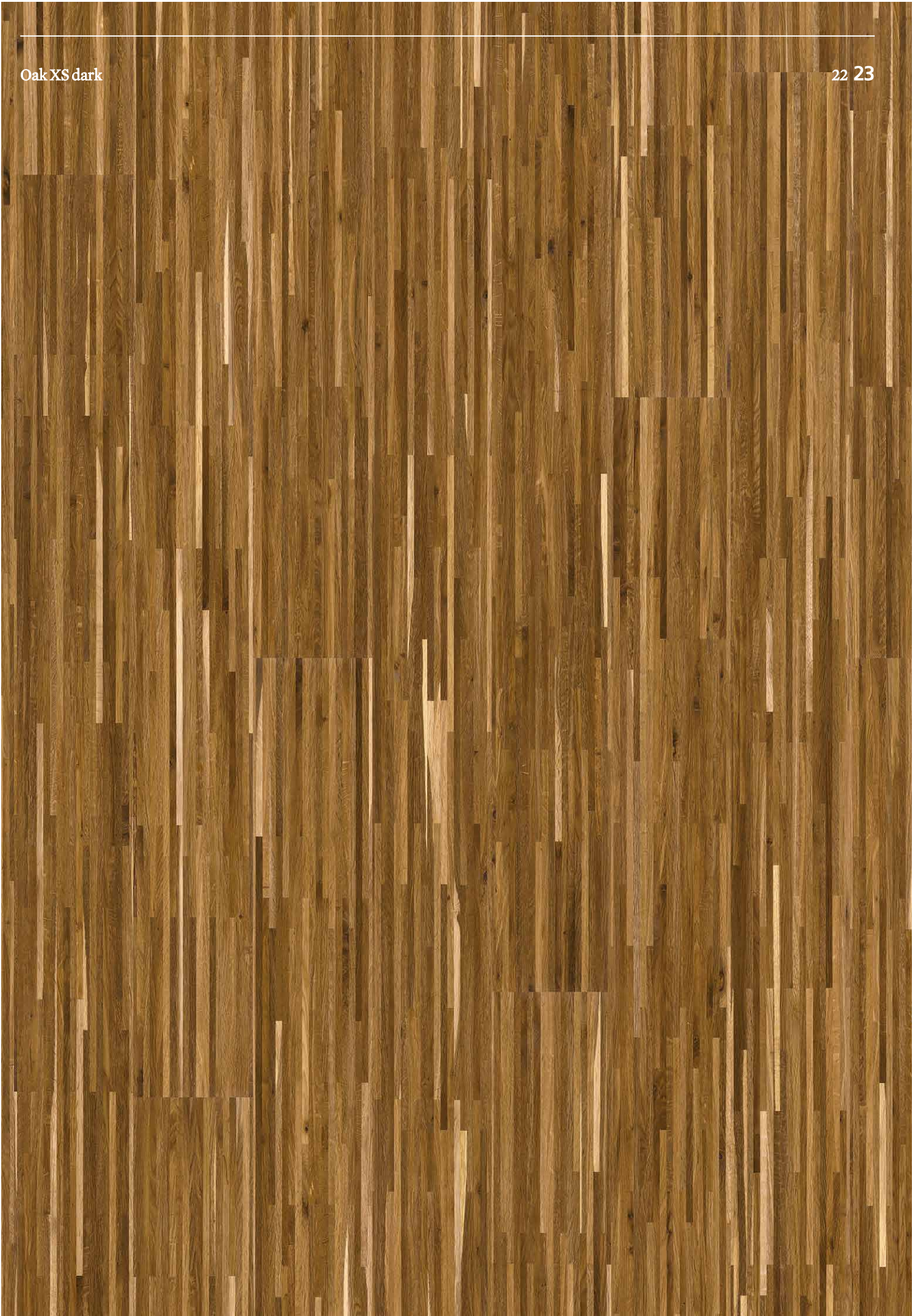
7' 10" x 9/16" x 7-5/8"

incl. up to 1/3 32"/47"/63"

1 box = 30.1 sq. ft.









# Quality in detail

## **THREE-LAYER PARQUET**

Wood is a natural material which swells or shrinks depending on humidity. This can result in distortion, cracks or open joints, particularly with solid wood products. Three-layer engineered flooring is more expensive to produce but it is technically superior. Berg & Berg parquet is made of three quality layers and so is especially dimensionally stable.

## **THE CORE LAYER**

is one key for a quality product. We use only slow-grown North Swedish pine with vertical annual rings. The core layer makes Berg & Berg parquet superior for its dimensional stability.

## **THE SURFACE**

Berg & Berg parquet is delivered from the factory with a finished surface. There is no sanding dust or unpleasant odours during the installation. Ideal for renovation work.

## **THE THICKNESS OF THE SURFACE LAYER**

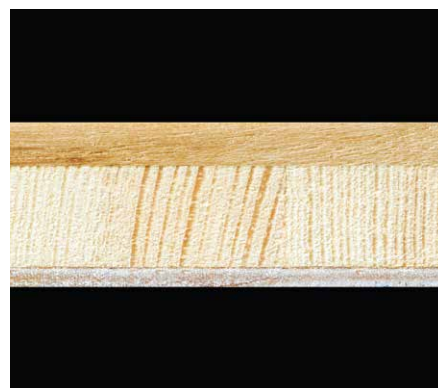
High-quality parquet has a long life span. This is why the surface layer has to be thick enough. Berg & Berg parquet has a surface layer approx. 3.8 mm thick which can be sanded multiple times.

## **THE LENGTH OF THE STRIPS**

In three-strip parquet, the individual board is composed of a number of individual strips. Other manufacturers incorporate short pieces at the end of the boards. Not so Berg & Berg. All the strips are at least 250 mm long; on average even over 400 mm. Even the wide plank boards are particularly long and wide at 195 x 2,390 mm.

## **RIGHT ANGLE ON THE EDGES OF THE BOARD**

The surface layer on Berg & Berg parquet is always milled at right angles on the edges and not undercut. That's why our parquet can be sanded without creating any unsightly gaps.





## Svedloc Plus

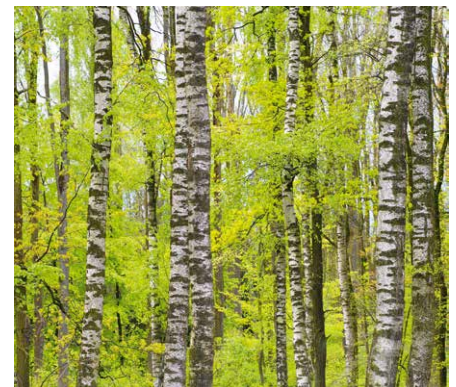
### **SVEDLOC PLUS**

is the advanced development of Berg & Berg's proven patented jointing system for three-layer engineered wood flooring. Due to the new setting of the profile the planks can be joined together and installed easily.

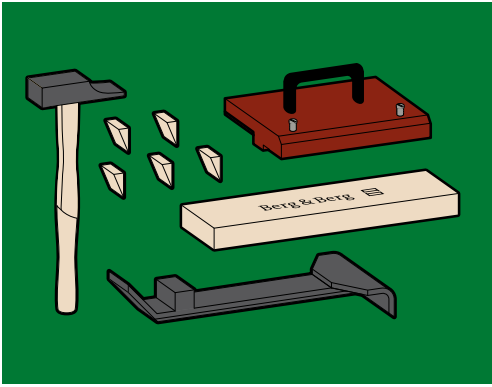
Berg & Berg planks with Svedloc Plus are suitable for both floating and glue down installation. Svedloc Plus offers the possibility of applying glue in the groove and therefore provides superior stability when installed floatingly.

### **SVEDLOC PLUS PROVIDES THE FOLLOWING ADVANTAGES**

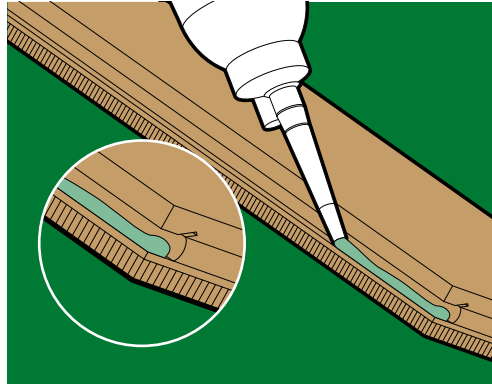
- simple and quick installation
- no creaking sounds
- no open joints
- proven superior stability
- can be walked on directly after installation



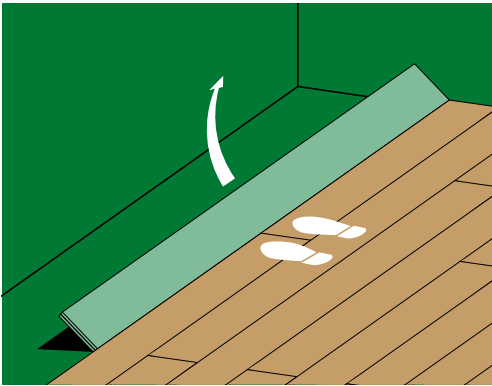
Video  
Easy installation



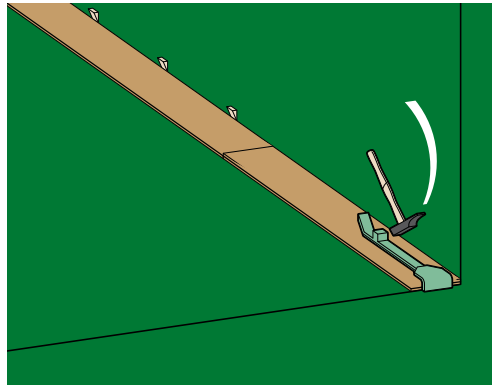
01  
necessary tools



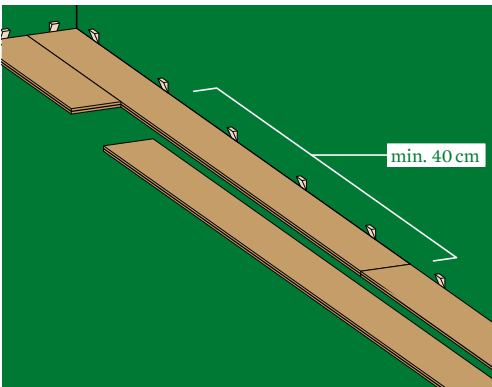
02  
correct glue application for  
floating installation



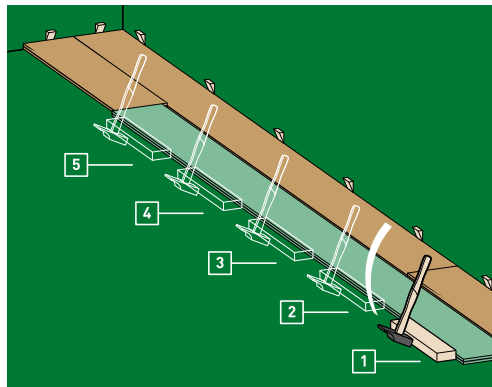
03  
Removal of a board



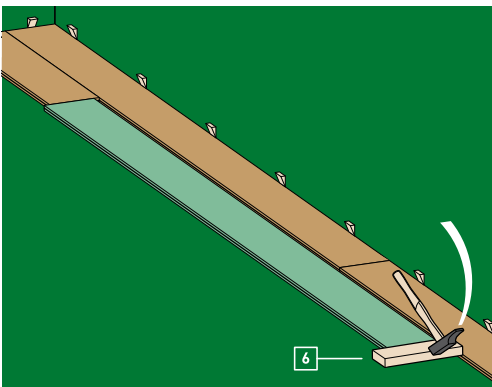
04  
Insert the last element of a row  
with the parquet tool



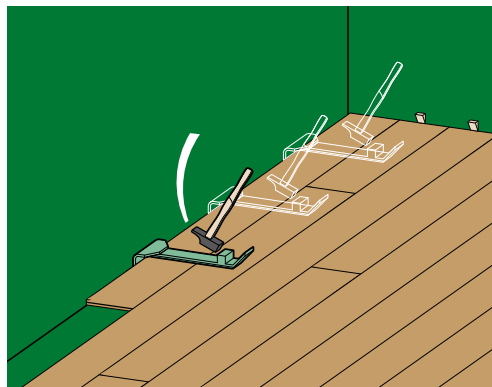
05  
Offset of the end joints min. 40 cm  
(16")



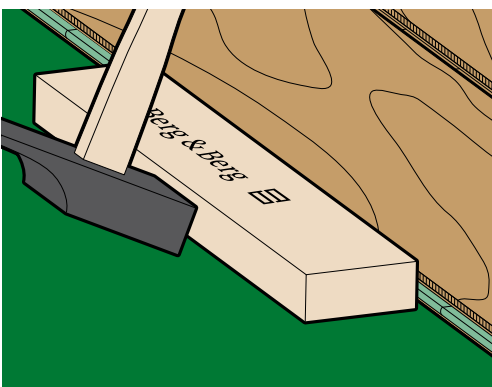
06  
Sequential use of the hammer  
and tapping block for the correct  
installation of the board



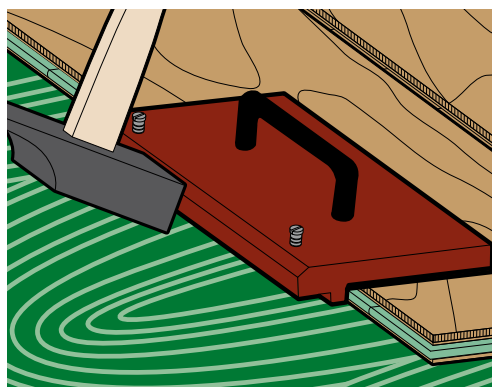
07  
Sequential use of the hammer  
and tapping block for the correct  
installation of the board



08  
Insertion of the last row with the  
parquet tool



09  
Tapping block only against the  
tongue – never against the groove  
or surface for floating installation



10  
Berg & Berg tapping tool for glue  
down installation



## 1 | PREPARATION

### 1.1 APPLICATION

Berg & Berg engineered flooring can be laid as a floating floor or glued down to the subfloor. The advanced Svedloc-profile makes the installation simple, safe and durable. Berg & Berg flooring is suitable for installation on water- circulating underfloor heating (radiant heated floor).

### 1.2 AMBIENT CONDITIONS

All rooms shall be normally heated during installation (minimum 18°C/81°F), the relative humidity must be between 35% and 60%. Maintenance of the correct relative humidity during and after installation reduces the possibility of deformation and the appearance of small openings in the floor. High temperatures from open fireplaces, tiled stoves or intensive sunlight (eg. conservatories) may cause damage. On floor heating the surface temperatures must not exceed 27°C (81°F) in all places. The maximum heat output must not exceed 55 W/m<sup>2</sup> and cover the whole surface. Coverage of floor heating systems with thick rugs or other floor covering is not recommended and may lead to unacceptable heat concentration. At the start of each heating season the temperature shall be gradually increased evenly over 7 days until normal heating levels are achieved. The original packaging shall be opened immediately prior to installation. During winter months the engineered flooring must remain in unopened packaging for up to 48 hours in order to reach the room temperature.

### 1.3 SUBFLOOR

The subfloor must be free of any carpets, clean, permanently dry, level, firm and structurally sound. Variations in level of the subfloor of more than 3 mm in 1 m (1/8" in 8") have to be filled or planed. The allowable maximum moisture content of a regular subfloor on a dry weight basis is for concrete 2,0%, for anhydrous screed 0,5% and must be verified before installation. With radiant heating the allowable maximum moisture content of the subfloor on a dry weight basis is for concrete 1,8%, for anhydrous screed 0,3%. The subfloor must be dried out according to the heating protocol for radiant heated subfloors ([www.berg-berg.com](http://www.berg-berg.com)) and the moisture content be measured prior to the installation. Subfloors with direct contact to the soil, sections which are over unheated rooms or crawl spaces or with increased humidity loads like boiler or laundry rooms allways require additional protection against moisture (vapour barrier).

### 1.4 SPACING

Wood as a natural material reacts to changes climate. Between the flooring and walls, and all other hard points, such as doorframes or heating pipes there must be a horizontal distance of 10 – 15 mm (1/2"). Wherever possible the flooring is laid under the door frames.

### 1.5 TOOLS

Apart of measuring tape, pencil, angle ruler and a saw the following tools are necessary and helpful for a quick and perfect installation: Hammer abt. 500g, parquet tool and wooden distance spacers. For floating installation a hardwood tapping block abt. 400 x 65 x 25 mm (16 x 3 x 1"). For glue down installation additionally a dented trowel or the innovative Parkett-X-Press and the Berg & Berg tapping tool from plastic. This is specially designed for a damage free and clean glue down installation. The tapping blocks are available as accessories from Berg & Berg.

### 1.6.1 FLOATING INSTALLATION

A moisture barrier of 0,2 mm (6 mil) polyethylene membrane shall be laid directly on the subfloor with approx. 20 cm (8") overlap. The barrier shall go up the walls abt. 5 centimetres (2 inches). The noise protection of max. 3 mm (1/8") thickness is installed without overlap on top of the moisture barrier. On a radiant heated floor the overlaps must be taped. The noise protection of max. 3 mm (1/8") thickness is installed without overlap on top of the moisture barrier. During installation the flooring elements are glued together with pvac glue conforming to the requirements of DIN EN 204 (d3). The glue must be applied in the grooves along the edge and the end. Floor segments longer than 15 m (50') or wider than 9 m (30') or complex shaped floor plans (e.g. L, Z, or U-shaped, hourglass, bottlenecked or in doorways) or where heavy or fixed installations would restrict the free expansion of the material, the floor must be separated with an expansion gap at a suitable position or glued down onto the subfloor.

### 1.6.2 GLUE DOWN INSTALLATION

Separation gaps between building segments must be copied in the flooring. Other subfloor cuts can be firmly linked and glued over. A vapor barrier primer directly on the subfloor helps to minimize the development of visible openings between the floor elements. The floor is glued directly on the possibly primed subfloor. There is no additional glue required in the grooves. We recommend elastic, water- and solvent free adhesives, which are designed for engineered flooring and underfloor heating (radiant heated floor). Please always follow the instructions of the supplier of the adhesive.

## 2 | INSTALLATION

### 2.1 VISUAL INSPECTION

Wood is a wholly natural product and each piece unique in colour and design. Our strict quality control procedures cannot completely eliminate possible defects. Should you find a piece which does not conform to our quality, please return it to the supplier for free exchange. Please check the panels and put defect boards aside. Imperfect and already installed boards cannot be claimed.

### 2.2 THE 1ST LINE

Start with a board in the left corner of the room, with the 2 grooves against the wall. Link board by board of the first line with the tapping block tightly together. Always hit with the tapping block against the tongue. The last board of the first line must be precisely trimmed and put in place with the parquet tool. Where necessary the wood floor shall be shaped to match the course of the wall. The straight alignment of the first few rows of the flooring is extremely important for the successful installation of the rest of the floor. During installation the expansion gap to all walls is secured by wooden spacers.

### 2.3 CONSECUTIVE LINES

The remaining trim-off from the line before is used to start the new line. The offset of the end joints of adjacent lines must be min. 40 cm (16"). For floating installation apply the glue (as described above) and prelink the boards horizontally. Tightly link the elements like a zipper using tapping block and hammer. Always and only use the tapping block to hit against the tongue. Never hit against the edge of the decorative face or directly with the hammer against the boards. Working in the applied adhesive (glue down installation) the red Berg & Berg tapping tool makes it easy to hit against the tongue only without dirty tools and without disturbing the adhesive ribs.

### 2.4 REMOVAL OF A BOARD

If by any means really necessary it is possible to remove the latest installed board as long as the glue is not cured. For this purpose one shall stand on the adjacent installed line and gently lifts the board which shall be removed.

### 2.5 COMPLETION

The last lengths are cut to size and inserted with the parquet tool. Immediately after completion of the installation, and during any long interruption to the installation, the wooden spacers must be removed. All expansion gaps are covered with matching mouldings. Remove all dirt and debris from the surface.

## 3 | MAINTENANCE

Berg & Berg wooden flooring is delivered with the ready to use Bona UV acrylic lacquer finish or High Solid natural oil (oxygen cured). Both surfaces meet the high level requirements for natural beauty, durability, upkeep and little maintenance. However accidents can happen. For smaller repairs there are touch-up-kits available. For further information refer to [www.berg-berg.com](http://www.berg-berg.com).

### 3.1 AN OUNCE OF CARE IS BETTER THAN A POUND OF REPAIR

The right maintenance from the start is important. With the progress of time the floor becomes less demanding and increasingly stress resistant. By following the recommendations outlined below, keeping your Berg & Berg floor in tip-top condition will require a minimum amount of effort:

- > Loose dirt, dust and grit shall be removed by sweeping or vacuuming.
- > Water causes swelling of the wood and can result in open joints and damage to the floor. Always remove spills and spots immediately with a slightly dampened cloth. Ensure adequate ventilation under flower pots with stick-on floor protectors or equivalent saucers.
- > Low humidity or high temperatures, particularly during winter or on underfloor heating, can result in small open joints and fissures in the wood. A comfortable room environment has a relative humidity of about 50 – 60%. It must not drop below 35%. Air humidifiers during winter are recommended. On underfloor heating the use of thick carpets or other floor coverings must be avoided.
- > A good quality doormat in front or just inside a door will save the floor from abrasive mud and dirt. Plus help to reduce cleaning time.
- > Use casters or slip on floor protectors (no nail-on protectors) under all furniture. Rollers must be soft and meet EN 12529 (bi-colored rolls). For office furniture chairs there are appropriate protection mats and their use is recommended.
- > Strong cleaners, sand, dry microfibre, acid or alkaline substances, solvents, stiletto heels, metal or metal wear can damage the finish and cause imprints, scratches and discoloration.
- > Only use the following recommended maintenance products and follow the instruction of the suppliers.

### 3.2 CARE FOR LACQUER FINISH FLOORING (BONA UV-ACRYLIC FINISH)

For the regular cleaning and maintenance use Bona floor care products for lacquer finished flooring (additional information available at [www.bona.com](http://www.bona.com)).



# Beronio

L U M B E R

2525 Marin Street  
San Francisco, CA 94124  
Phone: 415-824-4300  
[www.beronio.com](http://www.beronio.com)

### Le sac en papier

Ce sac est fabriqué  
à partir de papier végétal,  
100 % naturel.  
Double épaisseur 180 g/m<sup>2</sup>  
kraft blanc double  
de kraft brun.  
Capacité : 33 litres.  
100 % Ecographik®  
Ne le jetez pas.  
Il peut servir plusieurs fois.

2  
7  
4  
9  
5  
8  
6  
8  
8  
2  
6  
4  
7  
6  
3  
6